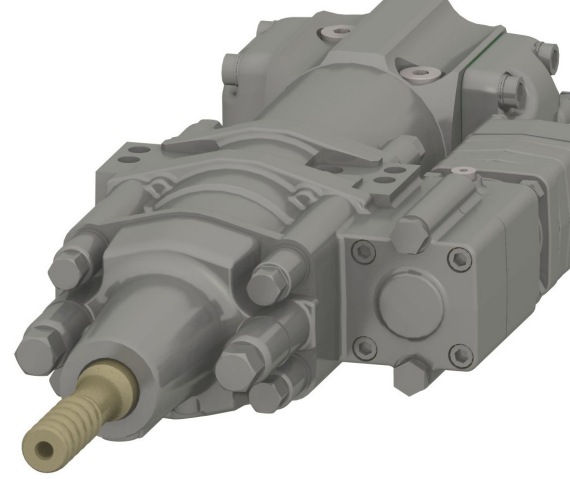


DF540L HIGH-PERFORMANCE HYDRAULIC ROCK DRILL



DF540L is a powerful member of the Doofer rock drill family with a patented percussion system capable of maintaining a high operational percussion rate. The DF540L model is highly flexible and can be installed in a variety of positions. The motor can also be installed on the right or left-hand side. In addition, this rock drill has a very low profile, only 82.5mm from the drill center line.

The DF540L rock drill is typically used in bolting, general excavations, and underground mining operations. Flushing media can be water or air. The rock drill has separated flushing box.

Optimized internal oil flow construction effectively preserves hydraulic power, resulting in a better oil flow efficiency and low operating cost.

TECHNICAL SPECIFICATIONS

DOOFOR DF540L DRIFTER

NOMINAL POWER CLASS		14 kW	18.8 hp
OPTIMAL MAXIMUM HOLE SIZE		64 mm	2 1/2"
PERCUSSION FLOW		90 l/min	23.8 gpm
PERCUSSION PRESSURE		140 bar	2030 psi
ROTATION MOTOR MAXIMUM FLOW ¹⁾⁴⁾	80cc	80 l/min	21.1 gpm
	125cc	90 l/min	23.8 gpm
	160cc	90 l/min	23.8 gpm
ROTATION TORQUE ¹⁾	80cc	504 Nm	372 lb-ft
	125cc	796 Nm	587 lb-ft
	160cc	975 Nm	719 lb-ft
ROTATION PRESSURE MAXIMUM		175 bar	2540 psi
ROTATION SPEED MAXIMUM ²⁾	80cc	250 rpm	
	125cc	250 rpm	
	160cc	250 rpm	
LUBRICATION	Air-oil mist	200-300 g/h	7.8-11.7 fl oz/h (2.3-3.5 dl/h)
LUBRICATION PRESSURE		4-7 bar	58-101 psi
LUBRICATION AIR FLOW		200-300 l/min	53-79 gpm
FLUSHING AIR PRESSURE ³⁾		5-7 bar	73-101 psi
FLUSHING AIR FLOW ³⁾		4000 l/min	1057 gpm
FLUSHING WATER FLOW ³⁾		150 l/min	39.6 gpm
RECOMMENDED MAXIMUM FEED FORCE		15 kN	3372 lbf
WEIGHT		131 kg	289 lb
SHANK SIZE		R32, R38, T38	

¹⁾ Intermittent value.

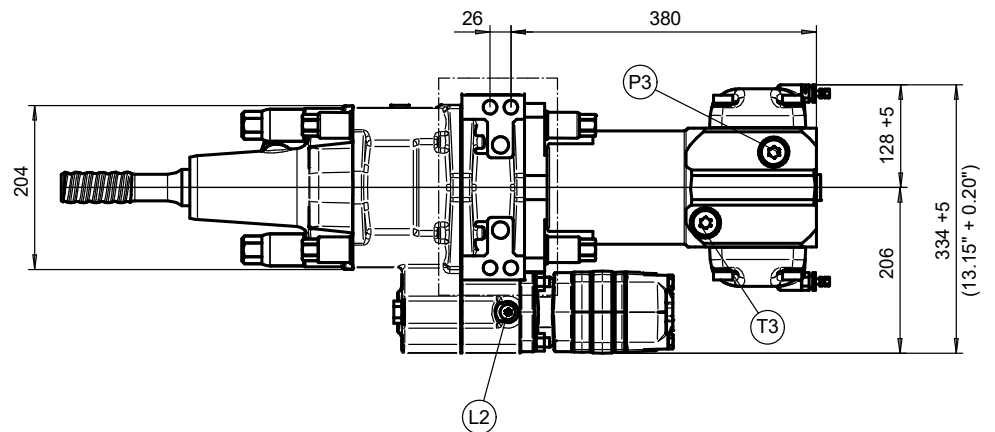
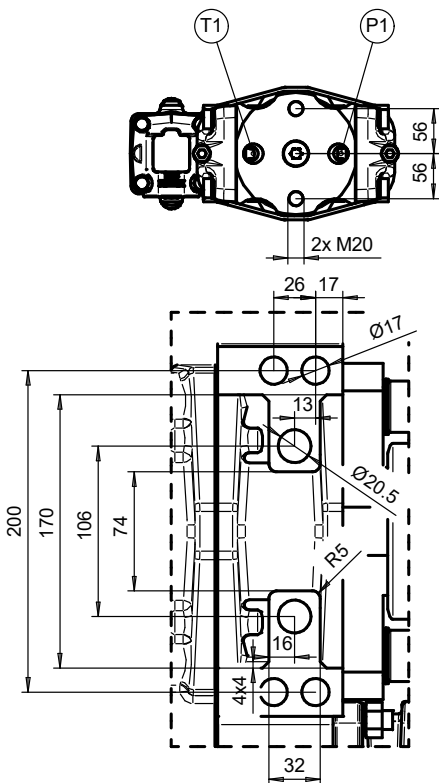
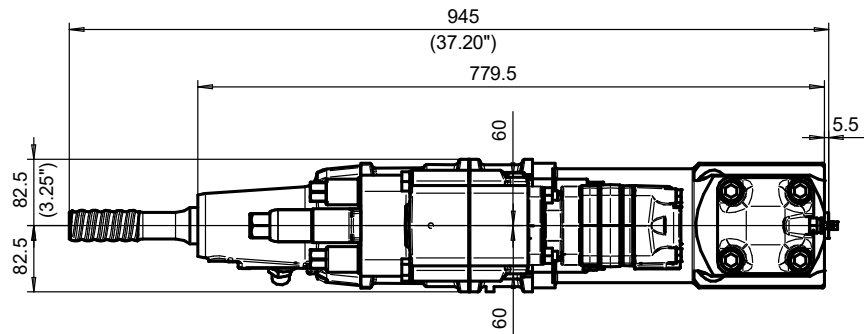
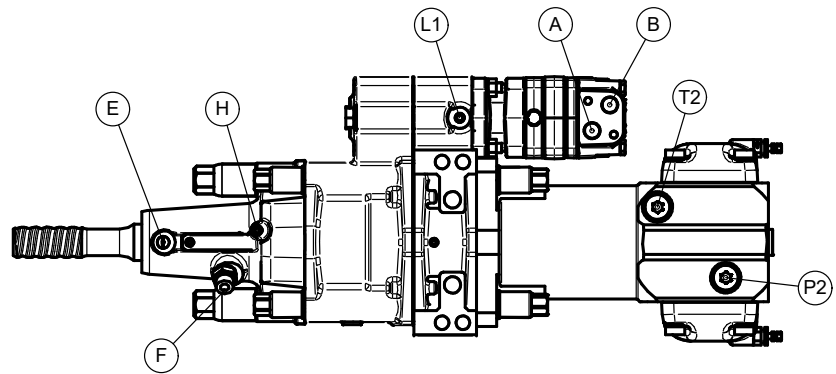
²⁾ Continuous value. Maximum recommended speed 250 rpm.

³⁾ Actual values vary according to drilling conditions and equipment.

⁴⁾ Value for default DMS motors only.

DIMENSIONS

- A) G1/2 Rotation A
- B) G1/2 Rotation B
- E) G3/8 Lubrication exit
- F) G1/2 Flushing (Optional: G3/4, JIC7/8, JIC 1 1/16)
- H) Flushing seal leak indicator hole
- L1) G1/4 Pressurised air-oil mist lubrication
- L2) G1/4 Plug, alternative to L1
- P1) G3/4 Percussion pressure
- P2 & P3) G3/4 Plug, alternative to P1
- T1) G3/4 percussion return to tank
- T2 & T3) G3/4 Plug, alternative to L1



Motor can be on the left or on the right side. Motor ports can be turned. Back port versions of motor are available.

Flushing head can be turned 180 degrees. Accumulators can be turned to any of the four positions (depending on motor.)

Doofor DF540L can be equipped with BLT-, BLTF-, EXT- and 2M options.

